

## Using new features in BSC-200, Networked Monitor System Controller

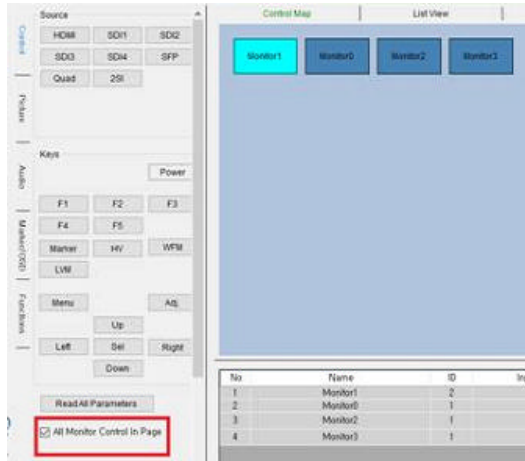
Please find and install the attached new version 1v070 of BSC-200.

In this version BSC-200, user can a control number of monitors three different ways.

### Method 1, Control all monitors.

Checking the box below, "Control All Monitor on Page" as shown below.

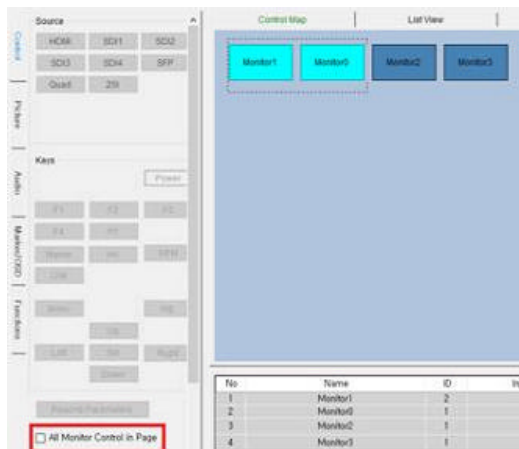
All the all monitors in the blue workspace will be controlled in parallel:



### Method 2, Control selected monitors.

User can control partial monitors on the page like below.

Clear check box and select monitors with a mouse left button press:



### 3. Control a single monitor.

Click to highlight only one monitor:

