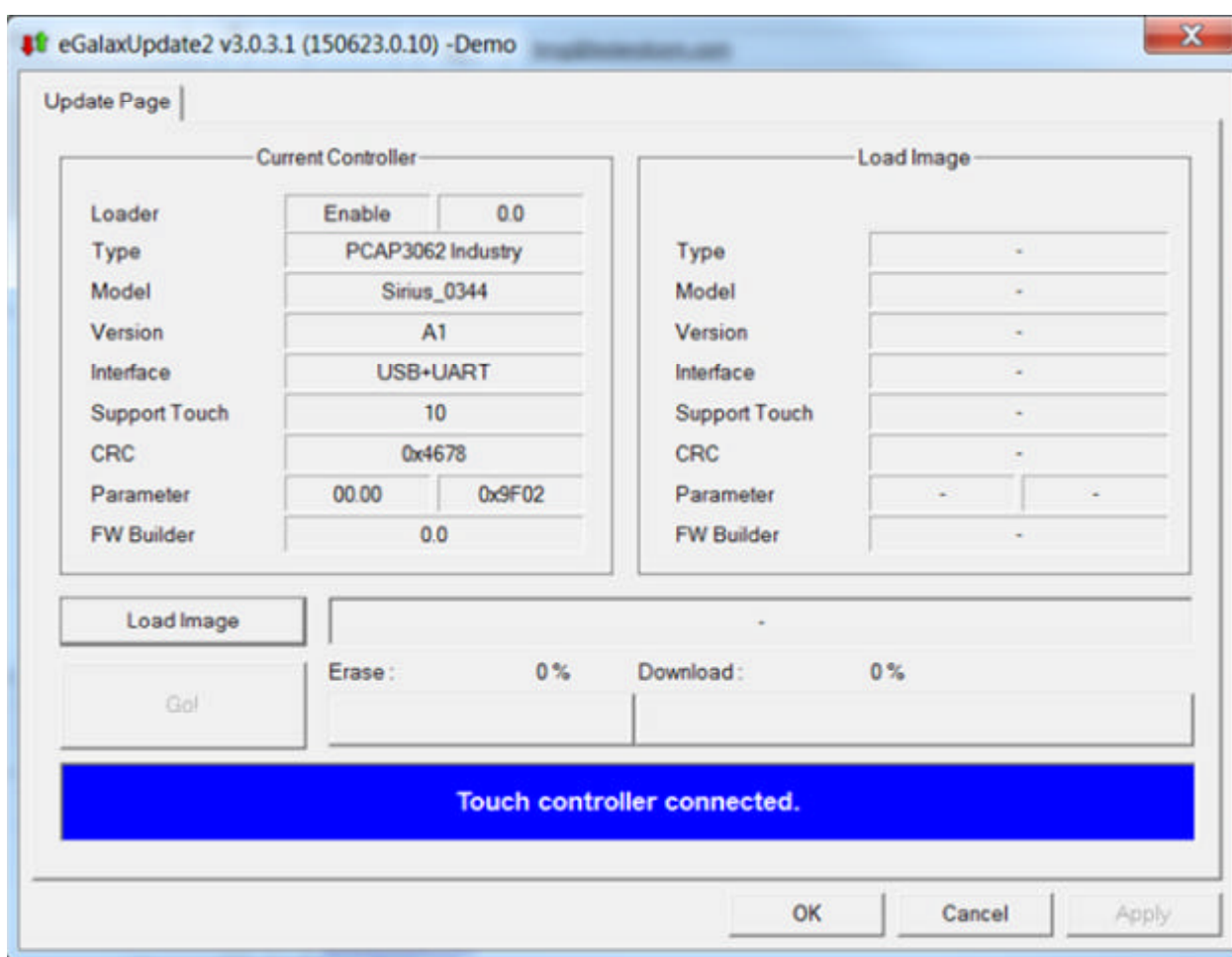


Date: Tuesday, January 17, 2017 1:46 PM
Subject: Loading updated driver for Boland 24 inch Touch Screens

See Page 4 for Connecting USB Firmware Download Cable >>

To update the firmware in the touchscreen driver board for the 16 or 24" Touchmoinitors, follow these steps:

- 1) Make a USB connection between the board to the computer, with the sensor (glass) ribbon cables attached.
- 2) Run eGalaxUpdate2.exe (from within the folder with the other downloaded files included).
- 3) Click on the Load Image button to open the file choice dialog box.
- 4) Select the ".32i" file that came in your zip download package.



eGalaxUpdate2 v3.0.3.1 (150623.0.10) -Demo

Update Page

Current Controller			Load Image	
Loader	Enable	0.0	Type	PCAP3062 Industry
Type	PCAP3062 Industry		Model	0344
Model	Sirius_0344		Version	A1
Version	A1		Interface	USB+UART
Interface	USB+UART		Support Touch	All Points
Support Touch	10		CRC	0x4678
CRC	0x4678		Parameter	00.00 0x9F02
Parameter	00.00	0x9F02	FW Builder	0.10
FW Builder	0.0			

Load Image

PCAP32_0344_vA1_0000_C000_Dawar_UR_DThqa.32i

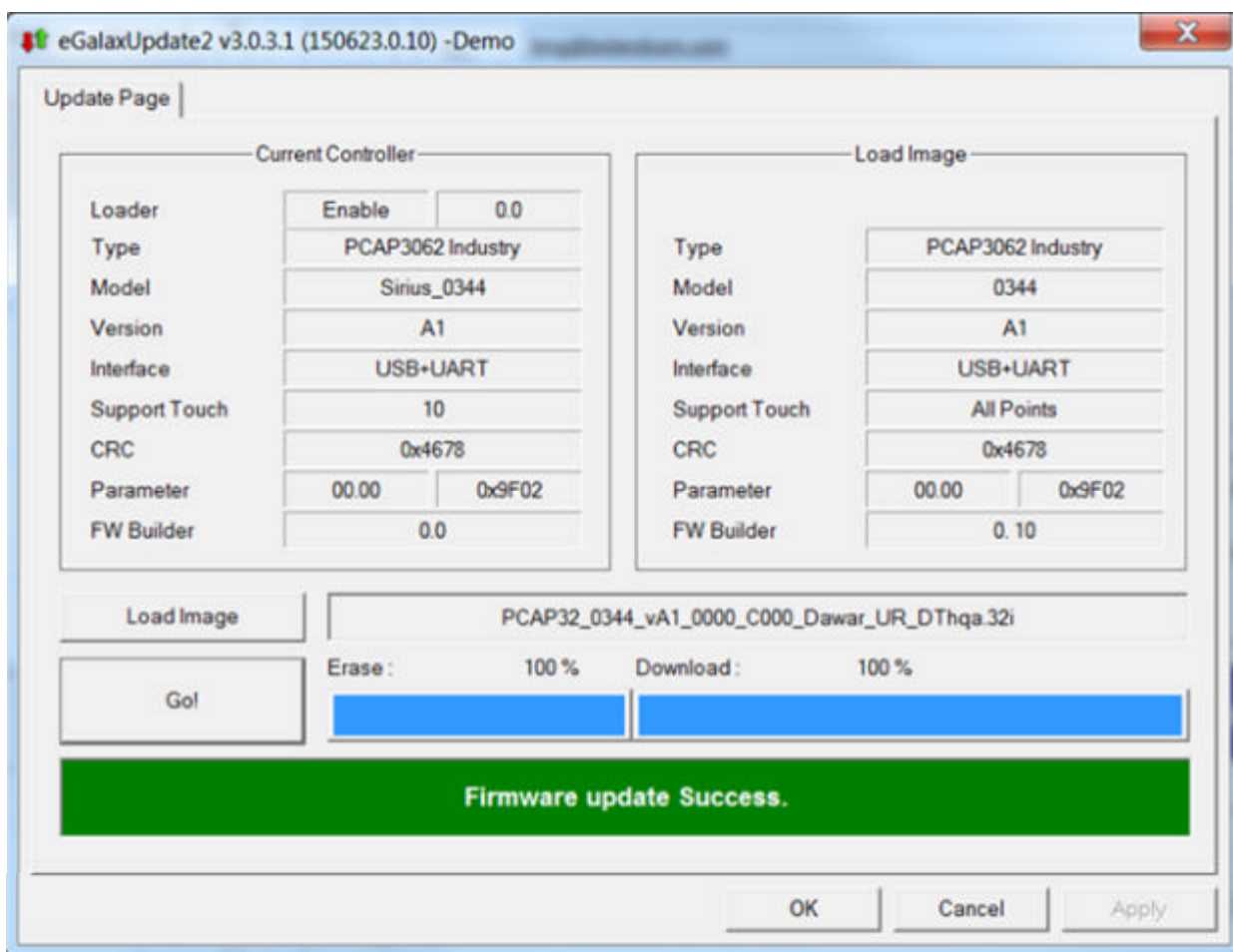
Go!

Erase : 0 % Download : 0 %

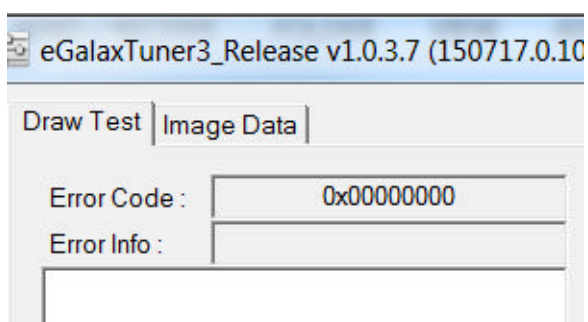
Load Image OK

OK Cancel Apply

- 5) Click the Go! button for the quick download and calibration.



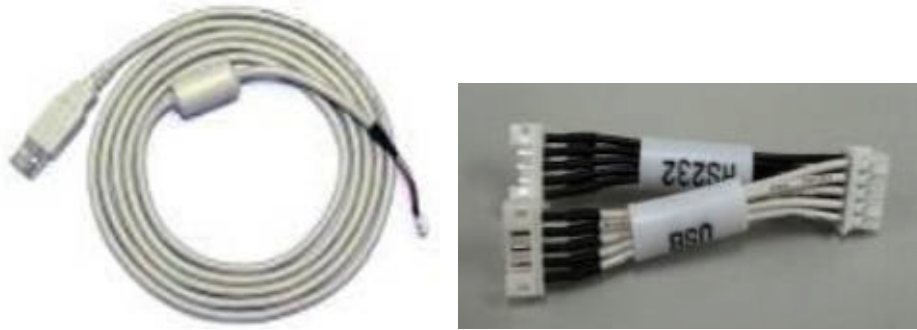
- 6) Close eGalaxUpdate2.
- 7) Open eGalaxTuner3_Release.exe
- 8) Verify that no error message is shown.



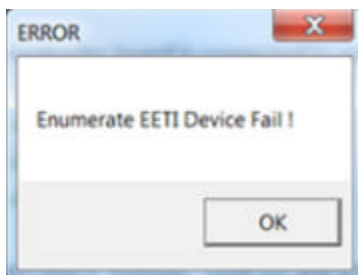
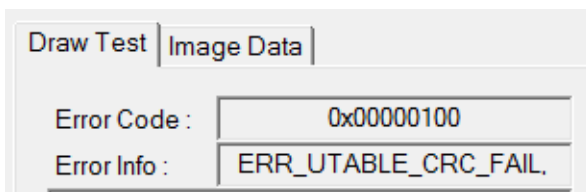
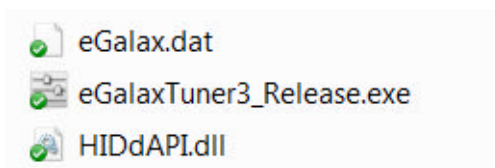
- 9) Close eGalaxTuner3.

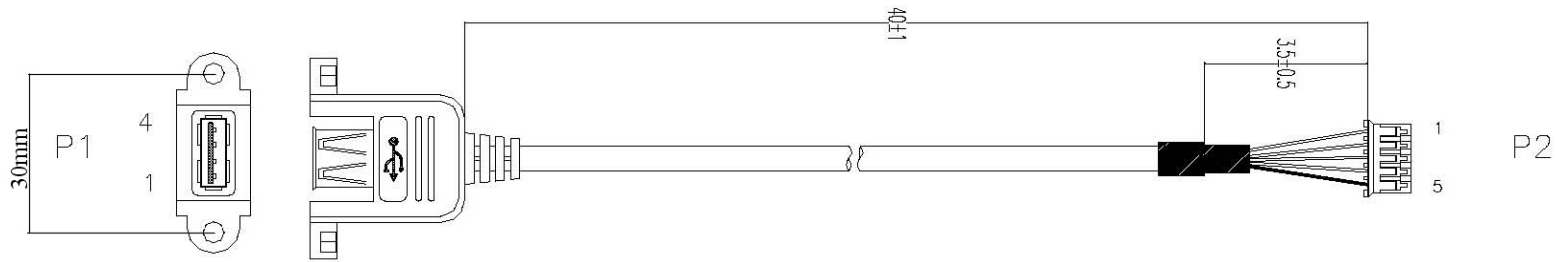
Assuming all this goes as expected, operate the touchscreen as normal. If you have problems with any of the steps, email or call **boland**. The office number is 800-918-9090, or internationally +1 949-465-9911, and we will get you up and running.

Firmware update cable and connection:



You will need the USB-JST cable above (see next page to make one). Plug into the Y adapter shown that is already inside the monitor. Disconnect the monitor's +5v power (used for RS-232 mode) from the board, as the board will be temporarily powered over USB, and having two power sources could damage the board. The monitor does not need to be powered at this point. Now plug the USB end of the cable into a USB port on the Windows computer.





PIN ASSIGNMENT

P1		P2	
1	—————	4	RED
2	———X———X———X———X———	1	WHITE
3	———X———X———X———X———	2	GREEN
4	—————	3	BLACK
SHIELD	—————	5	GROUND

MATERIAL LIST:
CONNECTOR:
P1: USB A FEMALE PVC MOLDED COLOR : BLACK.
P2: 2.0PITCH 5PIN HOUSING COLOR:WHITE.
CABLE:
UL2725 28#*1P+24#*2C+AEB OD:4.8mm COLOR : BLACK .

eGalax_eMPIA Technology Inc.	
DESCRIPTION : USB A F / 5P HOUSING 40CM	ISSUE : 94/3/31
CUSTOMER No.:	PAGE : 1 OF 1
PART No. ETP-CB-SXU01	REV : A
CHECK :	UNIT : CM